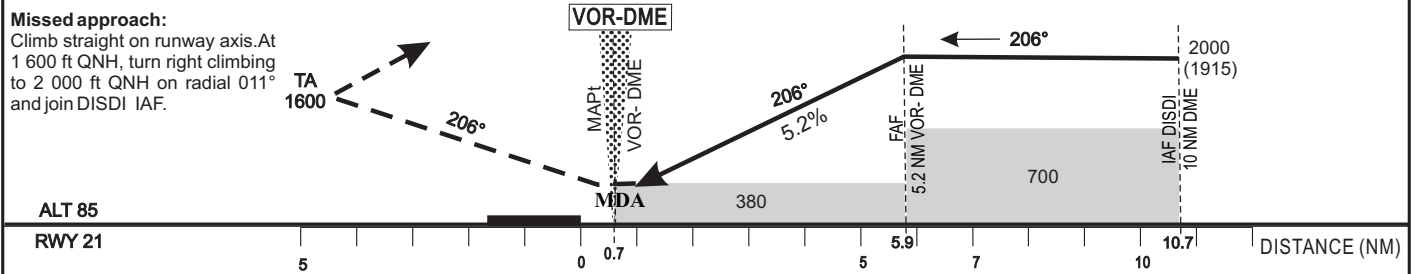


Distance to RWY 21 (NM)	FAP/FAF	5	4	3	2
Altitude (ft)	2 000	1730	1410	1090	770

TRANSITION ALTITUDE: 3000



CAT	VOR Z				Circling(3)				RVR for take-off CATA - B - C : 400 CAT D : 400
	OCA (OCH)	MDA MDH	RVR(1)	RVR(2)	OCA (OCH)	MDA MDH	VIS		
A	380 (295)	380 (300)	1200	1500	579 (450)	580 (450)	1500	Timing FAF/THR 5.9NM KT MIN SEC KT MIN SEC 90 3 Min 56 140 2 Min 32 100 3 Min 32 150 2 Min 22 110 3 Min 13 160 2 Min 13 120 2 Min 57 170 2 Min 05 130 2 Min 43 180 1 Min 58	
B	380 (295)	380 (300)	1300	1500	763 (634)	770 (640)	1600		
C	380 (295)	380 (300)	1400	1800	862 (733)	870 (740)	2400		
D	380 (295)	380 (300)	1600	2000	862 (733)	870 (740)	3600		

**Note :** (1) With approach lights - (2) Without approachlights - (3) Daytime only - OCH MDH AAL

AMDT10/22 : Update